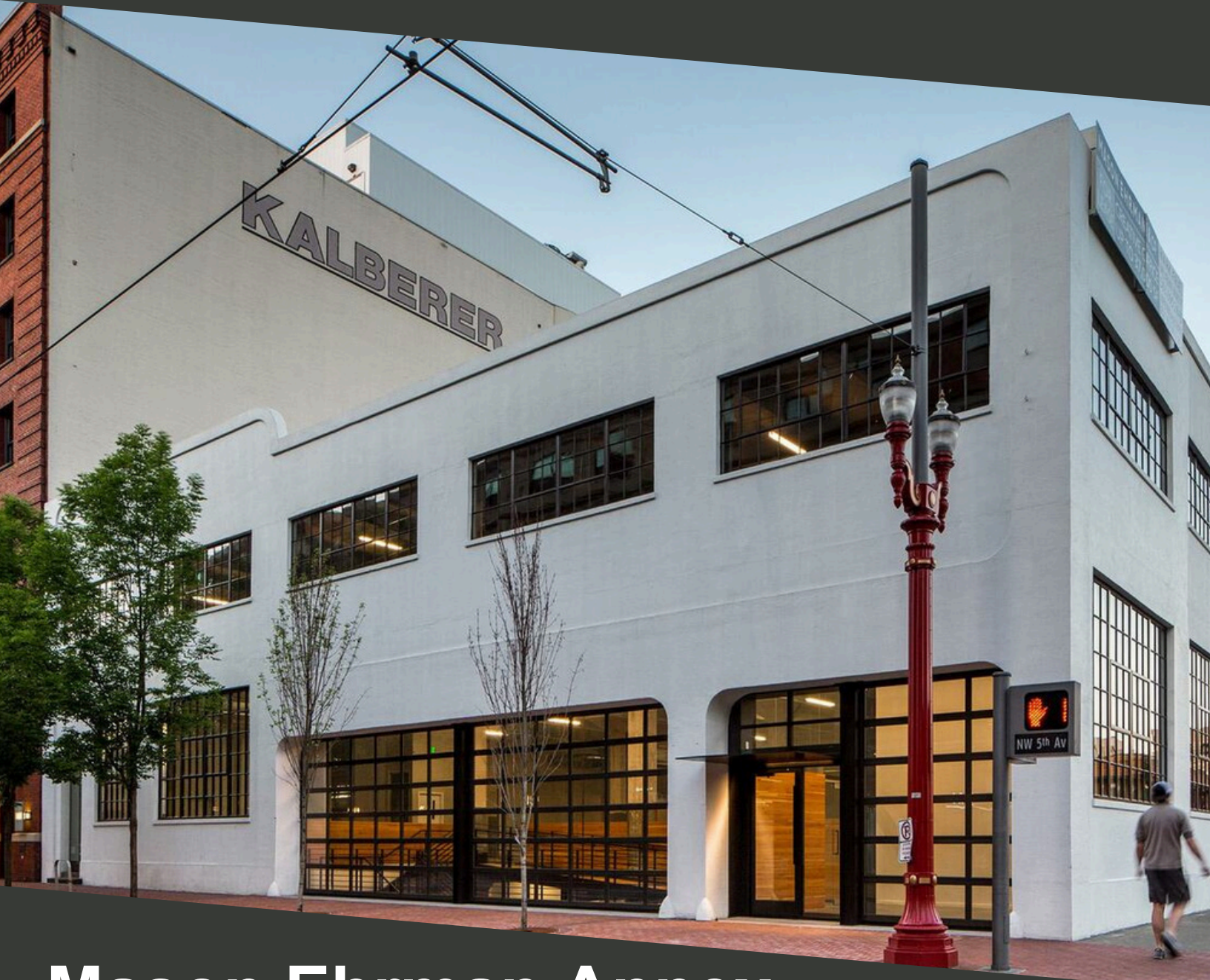


# NOW LEASING!



## Mason Ehrman Annex

208 NW 5<sup>th</sup> AVENUE, PORTLAND OR 97209

### CONTACT

[assetmanagement@prosperportland.us](mailto:assetmanagement@prosperportland.us) 503-823-3200

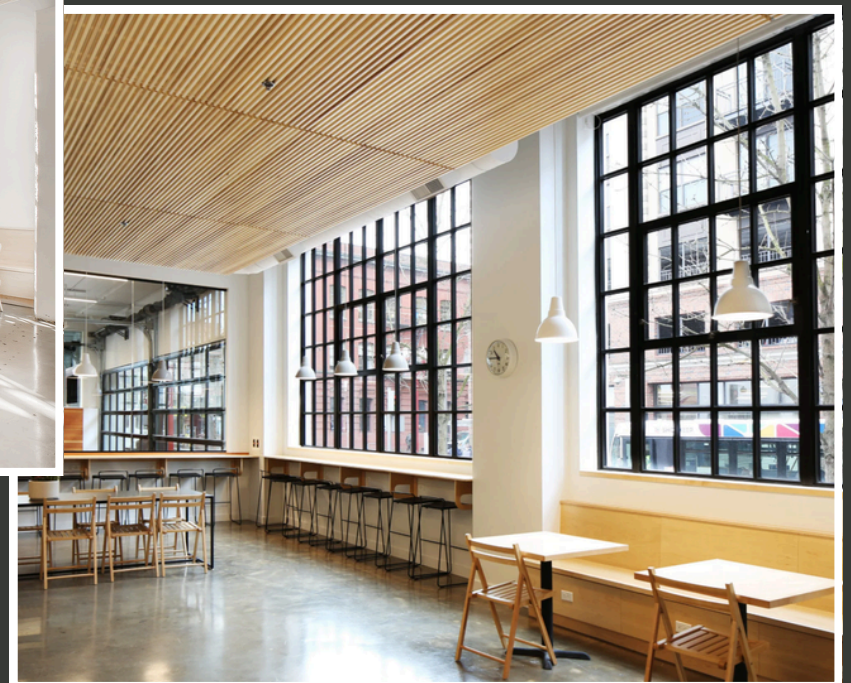
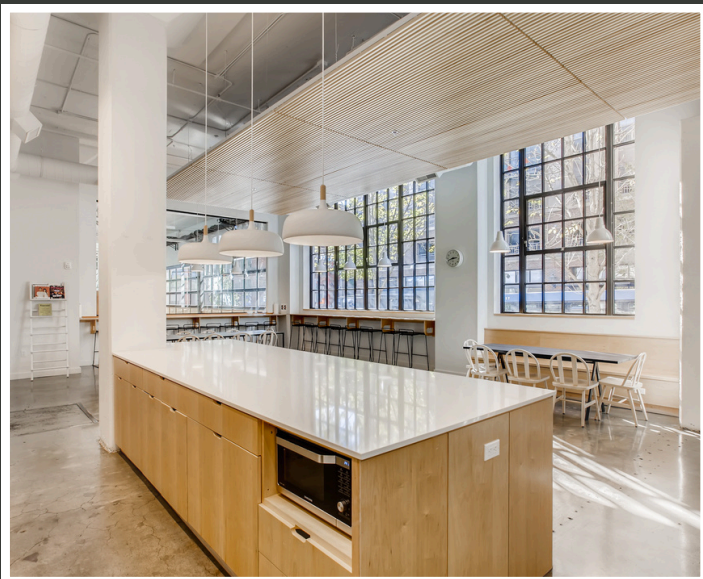
**PROPERTY LEASING  
INQUIRY FORM**



**PROSPER  
PORTLAND**



The Mason Ehrman Annex, a 2-story historic warehouse structure built in 1940 and renovated in 2017, has been transformed into a creative masterpiece, with modern creative aesthetics and quality that makes it an ideal location for a variety of tenant types.



# FEATURES & AVAILABILITY



- Shower facilities w/lockers
- Secured bike parking
- Natural Light
- Access rooftop deck
- Full seismic upgrades
- TriMet bus, lightrail, and streetcar access
- Creative Office / Flex



## Up to 20,000 RSF

2nd Floor ~9,900 RSF  
1st Floor ~9,900 RSF  
Basement Shared Amenities

\*Annex 2<sup>nd</sup> Floor can be combined with Tower 2<sup>nd</sup> Floor (~18,300 RSF)

## CONTACT

assetmanagement@prosperportland.us 503-823-3200

